

Bethel Church

2019 2020 ANNUAL
GENERAL
REPORT

Bethel Church

2020 ANNUAL
2021 GENERAL
REPORT

CONTENTS

GOVERNANCE REPORTS

Pastoral Report Mark Kotchapaw	page 7
Elders' Council Mark Kotchapaw	page 8
Board of Directors	page 9
Finance Committee Dave Dempster	page 11
Buildings & Grounds Steve Ditmore	page 11

MINISTRY & OFFICE REPORTS

Discipleship & Worship Amanda Van Halteren	page 15
Family Jamie Stinson	page 17
Youth Connor Price	page 18
Bethel House	page 19
Missions Ken Vissers	page 20
Church Administration Carmen Gauvin-O'Donnell	page 21
Church Office Keri Oosterhof	page 22

APPENDICES

Appendix A - Church Family Records	page 25
Appendix B - Membership Record	page 26
Appendix C - Director & Elder Nominations	page 27
Appendix D - 2020-2021 Budget	page 28
Appendix F - Motions for the AGM	page 29
Appendix G - 2018-2019 AGM Minutes	page 30
Appendix H - Independent Auditors' Report	page 33
Appendix I - Bethel's Vision Pathway	page 46

2019
2020

GOVERNANCE REPORTS

PASTORAL REPORT

• 2019-2020 REPORT •

Mark Kotchapam, Senior Pastor

Without a doubt this has been the most challenging season in my 35 years of ministry experience. It has felt like we boarded a rocket ship in March, landed on a new planet, and have been required to do ministry in a whole new way. Oh ya, not to mention, upon landing there was no manual because NO ONE HAD EVER LANDED ON THIS PLANET BEFORE!!! For a digital immigrant, this has been a huge learning curve for me, but I am grateful for our great Staff and larger circle of leaders who have been extremely helpful in this area.

I am extremely proud of the team that has allowed us to pivot (yes, I know that word is overused in COVID-19) and to continue to deliver ministries that are in keeping with our vision of discipleship. Don't forget our vision is: Responding to the heart of God; Transforming the city, nation and world.

As I look back over this past ministry year, it has been one wild ride:

1. With our training wheels off we launched into our new governance model.

2. The Fall of 2019 offered some exciting examples of ministry, some of which are highlighted in other reports within this annual report. Two examples that come to mind are the Brain Food luncheon where we served over 90 students following services at one of our December Sundays. I also think of the corporate worship at our Christmas Eve services, a particular highlight for me. Remember those days of no masks?

3. And then two and a half months into 2020, COVID-19 landed hard and fast.

- The BOD met to assess implications of COVID-19 and to articulate the way forward on numerous fronts. They have been extremely supportive of the Staff in these days.
- The Staff met, made the necessary changes and launched into a long journey of learning and shifting into new job priorities, while at the same time not stepping back from our calling to make disciples.
- I joined a city leaders' team that met weekly to listen to reports from various sectors within the city focused on dealing with the challenges of COVID-19. These meetings were sobering and were reminders of the huge impact of this pandemic. I'm deeply grateful to Rob Wood for his leadership on this team.
- We forged a new partnership with Lionhearts, a ministry that helps feed the hungry. We channeled thousands of dollars and

many volunteer hours into this ministry.

- Our ministry strategy suddenly shifted from a 6-8 month focus to a 2-3 week focus where the rules were constantly changing. Fluid documents took on a whole new meaning.
- Many of our Staff and volunteer leaders found ourselves exhausted but encouraged as we read articles about Zoom fatigue. We began to understand some of the new dynamics of being over-saturated in screen time.
- Our hearts became increasingly heavy as we saw and continue to see the impact of this pandemic on many small businesses. We're grateful for the low number of cases of COVID-19 in our region, but troubled by the economic fallout.
- The race issue exploded onto our screens and required some pivoting (yes, I have now used this word twice) on the part of the Staff and Elders.
- What started to emerge as the days turned into weeks and months, were the questions: What are we leading and who are we leading? With new metrics and shifting patterns of engagement we have at times felt like we are flying/leading blind.
- We then found ourselves living in and preparing for a new reality of church: Hybrid Church. For us, this refers to the new reality of having a strong online presence while preparing for some version of physical reopening. We have grappled with reopening in a manner that is loving (considerate of the broader city context), meaningful, sustainable, and legal. What is God asking of Bethel? We have prayerfully leaned on the wisdom of the BOD, the Elders, the Staff, input from our members,

and the daily inflow of information from our government. With numerous reports from denominational leadership and other churches reporting low attendance, and staff and volunteer burnout, we have not been quick to reopen.

- Amanda resigned and Connor signed!
- And now ... we are in the midst of a second wave as I write this report!
- One more thing ... when we reopen, we are unsure about what the 'new normal' will look like; however, are fairly certain that like most churches across Canada, we will be rebuilding.

If someone had shown me the above list last Fall, I might have thought they were intoxicated, but now I would call them prophetic! So bizarre!

So, as we move forward let me encourage you to:

EMBRACE what God is doing in this season of COVID-19. God has not gone covert – He is alive and well and absolutely at work!
PRAY your way forward. The church, the city, the nation and the world need a fresh work of God!

SUBMIT to God's work in your life. Your character is what counts and this season is a great opportunity for God to grow you deeply.

FIND a few with whom you can vent, grow and pray with. Perhaps allow a little more time for venting than normal!!!

LOVE the person right in front of you! In your home, at your work, in the park, on the sidewalk! It is simple yet simply life changing!!

ELDERS' COUNCIL

• 2019-2020 REPORT •

Mark Kotchapaw, Chair

ELDERS' COUNCIL

Mark Kotchapaw | Chair

Ken Vissers | Vice-Chair

Dirk Bouma

Broncos Lai

Eric Prost

I think I can speak for the team when I say that this year of working in the new governance model has been a huge learning experience. As an elders' council we have had to get used to the new rhythm of meeting every other month and then some of us joining with the Board of Directors in the alternate months.

As an Elders' Council we are mandated by Scripture which is expressed through our church policy. We developed a dashboard in order to monitor key aspects of our policy. The dashboard includes:

1. Prayer
2. Shepherding
3. Doctrine
4. Leadership
5. Great Commission Conscience
6. Linkage and Collaboration with the Staff and Board of Directors.

As a team we identified top priorities to address that came out of this dashboard, two of them being:

Linkage and collaboration with our Staff.

This involved Elders meeting with the Staff for the purpose of understanding their ministry, listening to concerns in moving forward, and praying with them. The Pastoral Staff will join our November (2020) meeting so that the Elders' Council can more thoroughly understand how we are making disciples, what is effective, demographics being overlooked, and resources needed. Our "business" is discipleship and as an Elders' Council, we need to more thoroughly understand how it unfolds at Bethel.

The study of various doctrinal issues including:

- Gender and marriage
- Women and leadership within the church in light of the nature of biblical authority
- The second coming of Christ and judgment
- The Holy Spirit
- The Church as the Body of Christ
- Sanctification

Since identifying our topics for doctrinal study, we set aside our February 2020 meeting to study the issue of authority. As we moved into 2020 we also recognized the need to study the issue of race, something not on our original radar. Thus, in August 2020 we took our whole meeting to discuss this. We invited Suchetan James (Equity and Inclusion Consultant Limestone District School Board), to discuss the issue of race and to help us develop a strategy for moving forward as a church.

With the onset of COVID-19 and its implications for the Church moving forward, the Elders' Council has decided to meet monthly in this season. It is our desire to shepherd and prayerfully support the Church through this difficult season.

BOARD OF DIRECTORS

• 2019-2020 REPORT •

OVERVIEW

2019-2020 marks the first full year of the newly-incorporated church. The Board of Directors (BoD) was approved by the church congregation at the 2019 Annual General Meeting. This board provides governance on behalf of the Bethel Church membership.

The BoD was made up of the following people and positions:

BOARD OF DIRECTORS

Jennifer Ellis | Secretary

Steve Dickey | Vice Chair

Brian Marchant | Chair

Steve Ditmore | Buildings & Ground

Dave Dempster | Finance & Treasurer

Stacey Wolfrom | Human Resources & Risk*

Carmen Gauvin-O'Donnell | Ex-officio

Mark Kotchapaw | Ex-officio

3 members of the Elders' Council also sit on the Board of Directors

*Stacey resigned from the BoD early in 2020. Brian Marchant took over the portfolio, and Steve Dickey took over as Chair. A big thank you to Stacey for her work on the board since incorporation.

Steve Ditmore, Brian Marchant and Dirk Bouma are now finishing their terms in their leadership roles. Please join us in thanking both of them as well for all of the energy, work and prayer that they put into their roles.

The BoD meets as a whole approximately every second month, with additional meetings called by the chair when the need arises. Below are the highlights from the BoD's meetings over the past year:

SEPTEMBER 2019

- New Board orientation
- Bethel staff presented plans, challenges

and opportunities for upcoming year

- Approved replacement of flat roof over east wing replaced
- Establishment of sub-teams for administration, finance and HR

NOVEMBER 2019

- Elders presented dashboard for tracking areas of focus
- Planning for Jamie's 10-year celebration
- Approved safety assessment to be done of Bethel Church building
- Reviewed requirements of incorporation to ensure compliance
- Continuing to review and update corporate policies

JANUARY 2020

- Ministry updates from staff, and prayer
- Plans to complete senior pastor performance review
- Resignation of Stacey Wolfrom accepted with regret
- Approval to move forward and sign agreement with Prison Fellowship as part of Bethel House ministry
- Building fund renamed mortgage reduction fund and to be used to pay off debt

MARCH 2020

- Applications being received for Pastor of Student Development
- Beginning to create policy for refugee mission
- Senior pastor has assembled team to assist with researching/identifying international mission focus
- Beginning to plan nominating process, to be led by HR director
- Covid-19 contingency planning beginning
- Met via Zoom with Bethel health care representatives and based on the discussion, decided to cancel in-person services beginning March 15
- New 2020-21 budget tabled for now, con-

tinue to use prior year budget levels for now

APRIL 2020

- Special meeting with board and staff to check in on how things are going during the pandemic and to pray for the staff
- Updated on some members involvement with Lionhearts' ministry
- Wage subsidy to be applied for
- \$2,000 of the money raised for Refugee relief to Faith Community Church in Alberta to help them meet their requirements to sponsor a refugee

MAY 2020

- Staff continuing to re-imagine Sunday morning virtual platforms
- Main church roof being completed
- Financial situation discussed in light of ongoing pandemic
- AGM policy amended to permit electronic voting
- Certain policies being updated to incorporate virtual meetings and pandemic issues
- \$40,000 government loan applied for and approved, \$10,000 is forgivable. \$10K to be used towards the new roof, \$30K to pay off loans coming due this summer

JUNE 2020

- Recommendation of hiring of Connor Price as pastor for youth, subject to successful meetings with parents, youth and staff
- Debriefed from feedback received from congregation regarding re-opening of church sanctuary
- Staff looking at IT solutions to aid in long term Sunday morning recording of services
- Discussion of current anti-racism movement – elders to review this issue on behalf of the church

SEPTEMBER 2020

- Recommending buying sanitization equipment to use for the church

Board of Directors Report

- Updated Bethel House policy approved
- Refugee policy addition to Missions policy approved
- Discussing requirements for successful re-opening of church sanctuary
- Draft protocols for the church to be circulated to Board by Carmen

LOOKING FORWARD

This past year has been a remarkable and challenging one for Bethel staff and leaders, as it has been challenging and different for so many in our community. We have been so blessed by our staff who have been continually responding to the changing landscape, working together to put on a weekly service, as well as re-looking at how we do all of the usual ministries and connection with people. The Board is so grateful for the tireless work that they have put in – THANK YOU!

The Board wants to thank Amanda Van Halteren for her years of dedicated service and commitment to Bethel. She has provided great leadership in developing the discipleship focus at Bethel as well as providing leadership in worship, using her gifts to teach on Sunday mornings, and supporting the work in many other ways. She will be missed.

We want to welcome Connor Price to the team. We are looking forward to bringing in his leadership and passion to work with the youth of our community – a very important area of need.

With the pandemic ongoing, the Board's focus will include the shorter term - supporting the staff in working towards establishing a live Sunday morning service, and continuing to develop ministry using virtual

platforms. The Board continues to develop its book of policies and improve its effectiveness in its governing role, and, as things get back to normal, will work with the staff to update longer term strategic plans and required resourcing.

Thank you to all who continue to track with Bethel, connect with others through life groups and other ways, engage with the weekly services and support the needs financially. Thank you for praying and please continue to pray for Bethel and in particular for the staff. May we continue to seek out God's will for us now and into the future, and align our plans, our investments and our efforts to where He is leading to enable us to reach and disciple the generations of today and tomorrow for Christ.

FINANCE COMMITTEE

• 2019-2020 REPORT •

Dave Dempster, Chair

FINANCE COMMITTEE

Heather Losier | Envelope Steward
Sophie Sage | Financial Consultant
Steve Dickey | Financial Consultant
Keri Oosterhof | Bookkeeper Steward
Jina Salomons | Assistant Treasurer
Dave Dempster | Treasurer

This year has been challenging for all. The Covid-19 virus has prohibited our gathering together as a corporate body; nevertheless record givings were received for which we thank God and his people at Bethel.

The following is a list of items that were completed by the financial team:

- Implemented and adhered to the financial policy of the corporate church
- Revised the fundraising policy included in the financial policy
- Reviewed with all staff the RRSP management through RBC
- Reviewed the signing authorities for church funds and implemented many of RBC's recommendations
- Completed the first financial audit of the Bethel Church Corporation, which is contained in Appendix E
- Formed a sub-team to strike a budget for 2020-2021; this budget was formed but canceled due to Covid-19 events. It was proposed and passed by the church to keep the past budget of 2019-20 for this fiscal

year. This budget is included as Appendix D

- Applied and received a CEBA loan that necessitates only $\frac{3}{4}$ of it to be paid back, by December 2022. This was used to pay off a 30K loan and replace the shingles on the back roof of the church.
- Applied for, and received CEWS.

This was a record year for Bethel Church in terms of giving to God's work. On behalf of our financial team, we wish to thank Bethel's adherents and members for their generosity. We are thankful for what has been accomplished through the faithful giving, and we look forward to seeing how God will continue to bless as we commit our resources to Him.

BUILDINGS & GROUNDS

• 2019-2020 REPORT •

Steve Ditmore, Director

2020 has been a unique experience for us all and it has been no different for the team looking after the Bethel Building and Grounds this year. With an older building there are always challenges and unexpected surprises. None of these could be faced without the people who serve as volunteers and staff. I would like to thank Donna Dickey, Ron Lambert and Brent Thomson for their help maintaining the church building with sage advice as well as physical labour. Mr. Steve Cousineau has been an integral part of the team and has coordinated contractor's needs and completed repairs at Bethel as well as its houses. Dave Dempster and Brian Perkins were invaluable in completing projects throughout Bethel and Bethel Houses.

This year we have concentrated our repair efforts on the exterior of the building. Both the main roof, front to back, and flat roof, above the Upper Room, have been replaced. The main sanctuary eaves were replaced as well as brick work completed at the rear of the main building. Throughout the interior of Bethel several rooms and hallways have been painted with direction from staff and coordination from Donna Dickey.

Cleaning, disinfecting and maintaining a safe environment for "re-opening" will be the next challenge for this and subsequent Building and Ground's teams. Preparations are underway to set up cleaning procedures and purchase equipment to eliminate and/or greatly reduce the chance of surface contamination. With your assistance in maintaining safe guidelines we look forward to seeing you soon, "mask to mask", as Bethel Church re-opens for services.

2019
2020

MINISTRY & OFFICE REPORTS

DISCIPLESHIP & WORSHIP

• 2019-2020 REPORT •

Amanda Van Halteren, Associate Pastor

This is my last official annual report....and as I reflect on the last six years, I am proud of the work we have accomplished together. In the area of discipleship we have multiplied our long-term life groups, started new ones, developed a annual structure for short-term groups, and our specialty TEDD talks. I take great satisfaction in how the culture around spiritual transformation, apprenticeship and discipleship has become part of our DNA. I have also enjoyed creating cohesion between our Sunday worship services & teaching with discipleship – and working with our Sunday teams to deliver services that are meaningful, relevant, impactful and Christ-focused. And while there remains much work to be done, I am confident that the skill, leadership, heart and passion to continue and deepen this area does exist within our community.

LIFE GROUPS



First, I want to thank the life group leaders who worked hard to move their life groups online (as pictured below) understanding that not only was spiritual connection and community important as we worked through COVID but also that our Sunday services would move online. And through getting their groups online they equipped Bethel people for Sunday worship on Zoom (Easter) and into the next year. So thank you to our amazing leaders



SHORT-TERM GROUPS

They continue to run and they provide a way for new people (either new to Bethel or new to discipleship) to connect with Bethel on a deeper level, aside from Sundays. They also provide some key core curriculum for integrating people into our discipleship culture. These groups also allow the staff or key leaders to get to know new people as well. And while we continue to have our short-term groups cycle through key curriculum, I am excited that we are also moving into more proactive discipleship this

fall with Alpha Marriage and Parenting thru the Phases.

LONG-TERM GROUPS

It was very rewarding that through the changes of COVID that the only coaching that was needed was to move our communities online; the structure and rhythm of our organization was transferable to the new reality! That was humbling and amazing to see – how people in the absence of Sunday mornings, found their “church” in their LIFE group. I had more than a few groups let me know that their group was how they stayed connected through the isolation and accountable for spiritual development. We learned perhaps that although distance doesn’t substitute for physical presence, not having to commute sometimes is an incentive to grab a coffee and sit down and do Bible study!

MEN’S NEXT LEVEL GROUPS

4 people said yes to training, and that means we will have more space for new people in the next few months. The other groups continue to run and meet regularly.

This past year we saw:

- 3 new long-term groups start, including one short-term group that completely transition into a long-term group
- Connect Community for young adults launch in partnership with Geneva House and Bay Park Baptist Church
- The continuation of more than 10 long-term groups

Some areas for growth and consideration in our community are the need for members to lead some of our short-term groups.

We saw this happen when a few people on the finance team took the lead on Financial Fitness this past year – I only hope that this philosophy of discipling each other can spill out into other areas of ministry. Leaders are always a necessity in any organization and while we have new leaders stepping up in long-term groups, oftentimes it doesn’t build capacity as many are taking the place of leaders who need a season of rest.

I also believe our biggest area for growth lies in our confidence and ability to share faith and disciple new believers into our community.

TEDD TALKS



TEDD Talks have had a growing reach in our community

– including broader topics and (hopefully) more relevant, and pro-active discipleship themes. Some of the Talks we have hosted included:

- Money Management
- Re-Thinking Your Devotions
- Catholicism and Protestantism
- Mental Health - the 1st Talk on Zoom

I see much more potential to use this to continue to equip in a variety of themes and focuses, and to potentially invite members of our community (as an outreach plat-

form). Finally, COVID also taught us that TEDD talks might be better online...even if we can meet in person!

OTHER DISCIPLESHIP EVENTS

NEIGHBOURHOOD POTLUCK & WORSHIP

We had a positive response for this event in February and our hope was to get people to meet each other...please pray that something will build from this...even in COVID time! We want our church to practically love the city, to love our neighbourhoods, and to BE the church where we live!

WOMEN'S DISCIPLESHIP

Ninety (90!) women came out in November 2019 – and we had a retreat planned at IAWAH for the end of May! Due to COVID, the retreat was canceled, but I can't help but highlight that God is stirring something in our women at Bethel – and more women are getting excited about discovering who they are created to be, walking in freedom, and pursuing God. I hope and pray that Bethel continues to “seek clarity as to what God is doing, developing a pathway, and asking God to speak to all of us about what is He already doing.”

WORSHIP

I do not know about you but one of the things I have found myself missing the most is worship – singing and praying aloud together. As I leave my position at Bethel, and as new ways to worship are explored, I do want to look back on 2019 to reflect on a few things worth celebrating:

- We had our first “jam” session as a worship team, allowing the worship teams to worship without an audience or the “pressure” of practice for church.
- We also had our first summer worship intern: Adda Edwards, who gave great leadership and vision to our Wednesday evening

services (doesn't that feel like a long time ago!?!?)

- We also were able to purchase a newer keyboard for our sanctuary, which (although hasn't been in use lately), will help our music production (online or in person) in the future.
- Our Christmas Eve service was by far the most positive response and interactive service we have had. From a staff perspective, one of the successes of this is that our own congregation participated in sharing the story of the good news with our community! We were hoping to recruit more volunteers for our Christmas services in the future... but it is looking like we will be happy if we are even able to have an in-person!



I am thankful for the many amazing volunteers we have for Sunday services. Not only do we have some great leadership Steve Gammon and Broncos Lai, supported by Jeannie Prinsen and some very talented musicians, we also have a supportive team behind the scenes – with Mark Babcock and Jeff Babcock overseeing our sound team and Julia Brook overseeing our visuals. Behind each of these leaders stands a strong team of volunteers who consistently show up, and make the services seamless...and therefore are often forgotten (unless something goes wrong! LOL) Finally, it is not only the service itself that

creates our Sunday experience, but the people who smile and the door and the people who provide food and drinks after the service (again, when handshaking and food sharing was still allowed!) Thank you to our team leads (Janet Lee & Caroline Cuthbert – Greeting Captains) and Mike & Tamara Barrett (Coffee and Conversation) along with all the individuals who created a welcoming space for our community on Sunday mornings.

Pray for:

- Creativity for the pastoral planning design team
- Our worship leaders and creativity for music
- That we would continue to worship in this season.

I end this section with words from “God of Abraham” by Maverick City Music.

Let us continue to praise His Name, together, apart, online or in person. May God's Name be praised.

*Respectfully submitted,
Amanda Van Halteren*

“God of Abraham” Maverick City Music

You're the God of covenant and of faithful promises
Time and time again You have proven
You'll do just what You said
Though the storms may come and the
Winds may blow I'll remain steadfast
And let my heart learn when You speak a
word it will come to pass

Great is Your faithfulness to me
Great is Your faithfulness to me
From the rising sun to the setting same
I will praise Your name
Great is Your faithfulness to me

FAMILY • 2019-2020 REPORT •

Jamie Stinson, Family Ministries Pastor

The fall of 2019 started out like every other year with lots going on and plans in the works. Then March 2020 arrived and the world was upended, and everyone had to pivot and life has not been the same.

Below is a condensed snapshot of what has been happening in Family Ministries this past year. I have missed seeing our families in person and look forward to when we can gather again!

NURSERY (AGE 0-2)



If we were still meeting in person at Bethel, I'm sure you would be surprised at how many babies and toddlers we have in this age group. Since mid-March, there have been 9 new babies born! In August we did a highlight video of all the new babies! It was so great to see all the new life. We currently have about 30 babies and toddlers at Bethel.

WAUMBA LAND (AGE 3 - 5)



We currently have about sixteen pre-schoolers on our attendance roster in Waumba Land. During the pandemic some of our kids have moved up but have only engaged with the program with their parents through the newsletters. I'm excited to get back to the church and see how much our children have grown!

UPSTREET (GRADES 1-5)



We continue to use the "252 Basics" curriculum in our UpStreet program and we have focused on the following themes this year:

- *Trust*. Putting your confidence in someone you can depend on (Sept 2019)
- *Courage*. Being brave enough to do what you should do even if you're afraid (Oct 2019)
- *Honour*. Letting someone know you see how valuable they really are (Nov 2019)

- *Joy*. Finding a way to be happy even when things don't go your way (Dec 2019)
- *Knowledge*. Learning something new so you can be better at whatever you do (Jan 2020)
- *Love*. Choosing to treat others the way you want to be treated (Feb 2020)
- *Forgiveness*. Deciding that someone who has wronged you doesn't have to pay (Mar 2020)
- *Humility*. Putting others first by giving up what you think you deserve (April 2020)
- *Determination*. Deciding it's worth it to finish what you started (May 2020)
- *Faith*. Trusting in what you can't see because of what you can see (June/July 2020)
- *Creativity*. Imagining what you could do because you're made in God's image (Aug 2020)
- *Friendship*. Using your words and actions to show others you care (Sept 2020)

We have such amazing volunteers in our UpStreet program. Our small group leaders have tried to stay engaged with our children through zoom calls. Now that we are into the fall, we will be setting these up once month.

Our Large Group Communicators have not been teaching on the stage since everything shut down. However, starting in October we will be bringing the teaching via video once a month to kick off our new theme. We are excited to be bringing our own teachers for the fall as we anticipate reopening!

FAMILY MINISTRIES COORDINATOR: RUTH GAUCHER

Ruth stepped down as the Family Ministries coordinator at the end of June. She did a wonderful job of keeping the UpStreet

SHOUT OUT to one of our UpStreet small group leaders, **Andrew Lee!** He really tried to stay connected with the UpStreet boys and their families since Covid hit. He managed to stay in touch with many of the boys.

Thank you so much Andrew for being another voice in the lives of our children.

May you be encouraged today knowing that you are making a difference in the next generation!

program running. She has been a wonderful colleague and a valued member of our staff team. I miss her dearly. We will not be replacing her part-time role as the UpStreet coordinator this year.

PARENTING WITH PARENTS

Being intentional when it comes to empowering parents continues to be an important part of our vision. It's our desire to help parents really win with their kids so we continue to provide different initiatives this year. The following represents what we've been doing to engage parents.

COMMUNICATION

- We have a monthly UpStreet Update and Waumba Land Update to better inform parents about what we are teaching the children and what events are coming up.

- When our church closed in mid-March, I decided to start sending out our newsletters weekly. Each newsletter included links to our music and weekly videos, family activity ideas to teach the UpStreet and Waumba lessons at home, announcements of upcoming events, and lots of other resources

Family Ministry

to help parents win at home as they disciple their children.

PARENTING WITH PARENTS INITIATIVES

- In November, I facilitated a “Laugh Your Way to a Better Marriage” short term life group. We had 12 couples attend and enjoyed lots of laughter and fellowship in our 5 weeks together.
- We continued our Coffee n’ Kids program on Wednesday mornings for parents and babies/toddlers. This provides a space for new parents to connect up until mid-March, when we closed our building.
- We offered a TEDD talk in November entitled “Youth Culture: Why are youth in crisis and How do we respond?” for families.
- Also in November we had a Grinch family movie night. It was well attended and lots of fun!
- For our Christmas initiative, the children collected items for the men at Bethel House.
- Christmas Eve, we offered a family-friendly Christmas Eve service and we did a Christmas play that children could participate in.
- In January, children participated in our church-wide Salvation Army Food Drive.
- We offered a viewing of the “OVER 18” Canadian documentary which highlighted the dangers of online pornography and the impact it has on our children under 18.
- February was our Family Fiesta Night for all our families in UpStreet and Jr. Youth. We had snacks, and did some fun fiesta games in the gym.
- In April, since we were no longer meeting in person, we offered an ‘at-home Easter experience for the whole family’ entitled EASTER JAM.
- In April, we promoted an online marriage night for couples entitled “YOUR BEST NIGHT OUT IN”
- Also in April we promoted a free virtual conference called “Pandemic Parenting”
- In May, Ruth and I dropped off over 60 family care packages to families! It was so fun and so great to visit with families outside as we dropped off packages.
- In June we did an online Family Scavenger Hunt where families had to race to hunt down various items.
- We also dedicated 8 babies to Lord this past year and prayed for the families.

As we continue to try and figure out ways to reach out to parents in these challenging times, we are hosting a ‘Parenting Through the Phases’ short-term Life group starting in October.

*Respectfully submitted,
and because children and families matter
Jamie Stinson*

MINISTRY REPORT

YOUTH

• 2019-2020 REPORT •

Connor Price, Youth Pastor

As the new youth pastor I don’t have anything to report for last year, but I am thrilled to have had a successful first month. A leadership team has been assembled for the youth, impactful youth events have already been implemented, and our first overnight camping retreat is coming up in a couple weeks at IAWAH. Thankful for the warm welcome and grateful for your support!

BETHEL HOUSE • 2019-2020 REPORT •

Bethel House is a ministry of the church providing stable, secure, abstinence-based (drug-and-alcohol-free) transitional housing for men who are in various types of recovery, moving back into the community from a time of incarceration or treatment for addictions.

Many people leaving institutional settings benefit from a stabilizing step in their recovery process before transitioning fully back into the community. Bethel House provides this step through residency for a period of 8 – 12 months. It allows men safe, affordable, housing that allows them to avoid old lifestyle patterns, and create new, healthy ones. The actual houses are situated at 318 and 324 Johnson Street, next to the Church.

The Ministry has a history with the Salvation Army's Harbour Light as a feeder agency. Referrals through Prison Fellowship of Canada (PFC) are beginning. Though COVID-19 affected our intake processes dramatically for four months, they are gradually moving forward again.

At the start of the pandemic, the Bethel House Committee (BHC) put protocols in place to protect the men:

- Both the BHC and resident "check in" meetings with the house manager and BHC members became weekly rather than monthly or bi-weekly. One result of the check-ins was that WIFI was added to the homes to help to deal with the residents' isolation, as community meetings and contacts with family and friends were not possible.
- Carmen liaised with Public Health which sent two nurses to do a tour to examine how things were being done and make recommendations. It was an affirming and informative process.



- We also went through our house policies, adding health-related COVID/pandemic procedures.

One set-back was the identification of needed renovations to 324 Johnson, to reconfigure the third floor and install a second bathroom in the home, to meet the requirements for physical distancing. As a result, the capacity of that home has been reduced to 3 rather than 5 until renovations are possible. It is being used as a 14-day quarantine location for men arriving at the Ministry, prior to their joining the congregate-living situation at 318 Johnson. The hope is that if funding is found for the renovations, there will be minimal disruption as the house is more likely to have low or no occupancy. Do not hesitate to contact us if you know of a potential source of funding for a ministry such as ours. This will also allow a place for isolation in the case of a resident testing positive during subsequent COVID-19 outbreaks.

As reported last year, the Bethel House Committee continues to develop well, and is able to support the men, but still needs a new Ministry Lead. The search process continues.

Two other important notes of thanks go to Lisa Porter, who continues to support the men and the Ministry with her time and talents, and Donna Dickey who has done an inventory of the houses, allowing us to ensure that 324 is properly outfitted.

Anyone feeling drawn to taking a role on the Committee, or learning about the Ministry Lead position is encouraged to contact Dave through at bethelhouse@bethelkingston.com or Pastor Mark at mark@bethelkingston.com or 613-5420-2990 for a chat.

As always, the biggest thanks go to Steve Cousineau for his servanthood to this ministry. He is the heart of the houses. As Lisa said last year, "He is the poster child of why the Bethel House ministry works and is needed."

We thank the congregation for getting behind this Ministry, and ask for continued prayer that God will guide us as we serve the men and our community, and especially as we seek a new leader for this important ministry.

*Respectfully submitted,
The Bethel House Committee*

MICAH 6:8 He has told you, O man, what is good; and what does the Lord require of you but to do justice, and to love kindness, and to walk humbly with your God?

BETHEL HOUSE COMMITTEE

Bob Landry
Bob Logan
Dave Stewart
Brent Thompson (BOD Liason)
Steve Cousineau (House Manager)
Pastor Mark Kotchapaw
Carmen Gauvin-O'Donnell

MISSIONS • 2019-2020 REPORT •

Ken Vissers, Missions Committee Chair

We are very grateful for the generous prayer, encouragement and financial support that the Bethel community continuously shows. We believe this to be a testimony to God's work through our community.

The extension of our longstanding missions committees to bring an overseeing body to unite each aspect of Bethel Missions is entering its second year.

MISSIONS COMMITTEE

Mark Kotchapaw
Ross Jansen-van Vuuren
Julia Jansen-van Vuuren
Sue Barham
Ken Vissers

(We hope to add two other members.)

A few of our objectives have been to;

1. Give an overview and evaluation of existing national and international partners and missionaries

This involves the revision of an evaluation tool used to better understand where our supported missionaries are in terms of needs and current ministries. This was performed in 2015, but as families change and ministries evolve (both purpose and location), we feel it's time to do this again. This tool will also require all those supported by Bethel to carefully read and (hopefully) agree with Bethel's vision and doctrinal statement.

CURRENT SUPPORTED MISSIONARIES

Our long-term and short-term supported missionaries are lovingly cared for by Kay Bartlett, Maureen Brites and Martha Blair, who oversee the distribution of funds,

prayer support and act as liaisons between our missionaries and our congregation. We are grateful for the excellent job that do.

City

Nancy Smith, *Geneva House*

Nation

Ashley Chan, *IVCF (Etobicoke)*

Vera Ivakina, *IVCF (Etobicoke/Mississauga)*

Zach McIver, *Navigators (Calgary)*

Joanna Moon, *The Dale Ministries (Toronto)*

Angela Gray, *Power to Change (Ottawa)*

Jessica Versteeg, *Power to Change (Montreal)*

World

Tom & Abbie Desloges, *Africa Inland Mission (DRC)*

Isabel Leaitch, *Bible-Centered Ministries Int'l (Spain)*

Sue Barham, *Latin America Mission (Latin America)*

Cara Johnston, *Navigators (Angola)*

Deane & Mari Clark, *Navigators (Thailand/ China)*

Dan McIver, *Navigators (International Teams)*

Tim and Brenda Noble, *OMF Int'l. (Thailand & Winnipeg)*

Paul & Marilyne Malicki, *Power to Change (Quebec City & Morocco)*

CURRENT SUPPORTED PARTNERSHIPS (ORGS.)

City

Kingston Pregnancy Care Centre

Prison Fellowship

Harbour Light (Bethel House)

nightlight

Lionhearts

Nation

IAWAH Christian Ministries

Constance Lake First Nation

2. To choose a region, country or people group that Bethel can support more in depth. This support is not necessarily financial – although an important aspect of support – but primarily support through awareness and opportunities for our congregation to personally become involved.

We, as a committee, began contacting our current supported ministries to inquire about current needs and the possibility of how Bethel could fulfill some of these needs beyond distant financial and prayer support.

We have yet to choose a region, country or people group, but have narrowed it down to a few possibilities.

3. Refugee Initiative. Bethel is part of a second refugee support initiative to bring another family to Canada. Efforts have been slowed due to COVID-19. Anne Claros and Janet Lee are heading up this team.

4. To bring greater awareness of our partnerships to our congregation. We have been thrilled with the higher profile we have been able to give to our workers in our on-line YouTube services. We plan to continue to use this tool to make these workers more visible to our congregation.

CHURCH ADMINISTRATION

• 2019-2020 REPORT •

Carmen Gauvin-O'Donnell, Church Administrator

What a year it's been! There I was happily trotting along, pushing paper, both literal and electronic, monitoring teller teams, working on policies about policies (I only wish I was joking there), when all of a sudden...

... COVID! PIVOT!

(Have you noticed how PIVOT and COVID both have 5 letters, and the letter O and I in common? This is no coincidence, I'm sure of it.) The church was closed, and we were working at home.

And yet, the paper-pushing went on and I turned into Little-Mrs.-Research-and-Narrow-Policy-Development Lady:

RESEARCH

- "What's the latest from the government on the closures?" (on a weekly basis, LOL!)
- "Can you look after applying for the government's wage subsidy for the staff online?" (YES!)
- "Do you think we'd be able to rent the old drive in? Who bought it?" (NO - we have no idea who bought it!)
- "Take a look at this: there's a product out there called G-Clean 200 that might be useful for sanitizing when we reopen!" (YES!)

The Board approved the purchase at their last meeting)

- "When Public Health says no more than 50 inside each "space" – do they mean 50 total in Bethel Church, or 50 max per "space" in Bethel church (i.e. up to 50 in the gym, AND up to 50 in the Sanctuary?!)" (YES! Limited by what social distancing will allow, of course)
- "Is there a difference between having "church services" and having groups in to use the church?" (YES! Church services are up to 90 people (30% of capacity), all others are whatever indoor group maximum the province has set... and changed... and reset!)

POLICY

- Bethel, a closed church, doesn't really need new policies at the very moment, but Youth Group Leaders that meet the kids online do! And God bless our partners Plan to Protect, they came through, pivoting as well, and creating draft online engagements policies for us to use and modify, and updated refresher training that we'll be using this fall.
- The Refugee Committee helped me draft formal policy/procedures for their work, approved by the Board so that they can con-

tinue the work on bringing a second refugee family to Canada.

- The Bethel House policies were modified with the Committee's help (and Public Health's) to add COVID (and general pandemic protocols) for our residents' safety, also approved by the Board.
- Finally, the last couple of weeks have consisted in my coming up with a Draft Reopening Plan which the Board is looking at, and which Keri and Jina Salomons have been helping me with as regards the Sunday services in the COVID time.

Hank Hanegraaff often says, "the living waters of the Gospel are free, but somebody has to put in the plumbing!" And though we've served from home, we hope we've ensured that, even while we've pivoted, the plumbing keeps going in so that Bethel Church, Kingston can continue to "Love God Passionately; Serve Others Significantly", event in the time of COVID and onward. Thanks for your support and prayers.

*Respectfully submitted,
Carmen Gauvin-O'Donnell*

CHURCH OFFICE

• 2019-2020 REPORT •

Keri Oosterhof, Office Assistant

As I sit to write, it's easy to get sidetracked by thinking only of what's happened in the past 7 months and the changes the pandemic has brought to Bethel. But this report reaches all the way back to May 2019, and it's important to remember what was happening "way back then" – to see the journey God has brought us on to today.

My role at Bethel is to assist and therefore you may have read about the following events in the pastors' reports. So thank you for indulging me as I take a few minutes to relive a few moments that I had a particular hand in!

In Summer 2019 we had our second year of Sunday & Wednesday services. (What a difference compared to this summer!) It was a busy summer, with that old phrase "Sunday's coming" always on our lips...as "Sunday" was every 3-4 days! However, it was a fun summer of sunny Sunday mornings and intimate Wednesday evenings. And let's not forget our talented worship intern, Adda Edwards, who brought us great music and also relieved some of the behind the scenes service execution from my plate.

In Fall 2019, my focus was shifted to the Global Leader Summit. (Again, what a difference compared to this year where our staff participated in a virtual GLS from our homes in August.) Held at Bay Park Baptist Church in late October, I had the role of Onsite Event Manager. I found myself at Bay Park quite often and was not at *all* jealous of their "new" facilities, lol. GLS was my first hands-on experience with multi-church collaboration, from our leadership team to the 30+ volunteers to the sourcing of event supplies from various churches. I learned a lot about letting go of doing everything myself, and I'm extremely grateful to everyone involved...especially to one particular lady who spent hours mopping up a backed-up sewer line!

Christmas Eve was a particular highlight of 2019. I remember struggling with finding the overall creative look and ambiance of the service to go along with the music, drama, and teaching that Amanda, Jamie and Mark were working so hard on. Finally, I stumbled across a particular set of background graphics and video clips, and things just clicked creatively. It turned out to be a beautiful service with lots of twinkling lights, soul-stirring worship, and an inviting drama that allowed kids of all ages to be a part of the Christmas story...including our Treasure, Dave Dempster, with his very own angel halo!

Speaking of creativity, one of my unexpected joys of working at Bethel has been tapping into my creative mind, which I would have said was non-existent three years ago. While far from professional, I am amazed at some of the sermon series graphics, special event materials, and other projects that I've created. This past year I've enjoyed figuring out new techniques, learning from mistakes, and continually improving. I've also dived deeper into our website as time allows; it has limited capacities for the lay-person, but I'm learning to use what it does have to (hopefully) create a better visitor experience.

My creative skills have also expanded into filming and video editing – brought on by necessity due to Covid. I'm finding it fun and interesting to create our YouTube services and I'm thankful for the intuitiveness I have for learning new computer software and online platforms. It has made the pivot from in-person to online services relatively stress-free, as far as my responsibilities lie. (The rest of the team can speak from themselves!) However, I can get overwhelmed when I think about the tech things that I don't know, or can't easily problem-solve. In those moments, I try to remember that we are only one local church with a loving and supportive community who appreciates the

work we do, no matter how simple or fancy!

I am extremely thankful to have been allowed to work at the Bethel office since the beginning of the pandemic in March. The building has been eerily quiet at times, but keeping the routine of a normal work week has allowed me to bring better energy to other changes brought on by Covid. One change in the realm of day-to-day office work has been to move the financial tasks with our bookkeepers from weekly in-person paperwork pick-ups to bi-weekly online paperwork submissions. This new system has actually freed up a few hours each week, allowing me to focus on other things that take more time these days. For example, in the Spring I was able to spend quite a bit of one-on-one time by phone with a number of individuals who needed help with setting up, using, and/or troubleshooting Zoom so they could use it for their Life Group or our Zoom church services. (Shout-out to the *real* tech support people we phone when things break. It's a hard job!)

Lastly, I can't end this report without mentioning the departure of Amanda, our beloved Associate Pastor for the past 6 years. I had the privilege of working with her for 3 years, and prior to that I was a volunteer on a number of her initiatives. I barely remember Bethel without Amanda! She and I worked closely together many things, and moving out of that work relationship might be one of the biggest changes ahead for me, even considering all that Covid has brought.

As I think about known and unknown changes ahead, I am approaching the future with curiosity and openness. My prayer for myself and for our Bethel team is that we will work according to Proverbs 16:3.

"Commit your work to the Lord, and your plans will be established."

*Serving in Christ,
Keri Oosterhof*

2019
2020

APPENDICES

CHURCH FAMILY RECORDS

• MAY 1, 2019 - SEPTEMBER 30, 2020 •

MARRIAGES

Sarah Alakas & Jason Duiella *(June 2, 2019)*
Emily Worrada & Jacob Flood *(December 21, 2019)*
Faith Guo & Michael Ylagan *(March 27, 2020)*
Janet Breimer & Dave Lenton *(April 18, 2020)*
Bethany Ricker & Jason Basaur *(May 23, 2020)*
Christina Moi & Matt Pierce *(July 24, 2020)*

BAPTISMS

Sage Streight *(June 9, 2019)*
Grant Thomson *(June 9, 2019)*
Alyssa Fenuta *(November 24, 2019)*
Paul Allison *(September 13, 2020)*
Christina Moi *(September 13, 2020)*

FAMILY DEDICATIONS

Eric & Ashley Bateman, with daughter Sophie *(October 20, 2019)*
Adam & Jen Harper, with daughter Callie *(October 20, 2019)*
Yutian & Stacey Zhao, with son Caleb *(November 24, 2019)*

MEMBERSHIPS

To be ratified at the AGM October 20, 2020

Jonathan de Leyer
Justine de Leyer
Neil Sheppard
Heather Losier
Mark Fathers
Sally Fathers

DEATHS

Sheila Carnegie *(August 26, 2019)*
Betty (Elizabeth) Myers *(July 31, 2020)*
Dawn Carnegie *(September 24, 2020)*

MEMBERSHIP RECORD

• AS OF SEPTEMBER 30, 2020 •

Babcock, Mark	Jansen-van Vuuren, Ross	Roy, Ginette
Barham Vissers, Sue	Jewell, Susan	Roy, Raymond
Barrett, Michael	Kotchapaw, Mark	Rusk, Chris
Barrett, Tamara	Kotchapaw, Rhonda	Rusk, Sharon
Bartlett, Art	Laframboise, Candice	Sage, Sophie
Bartlett, Kay	Laframboise, Mike	Salomons, Greg
Batson, Brenda	Lai, Broncos	Salomons, Jina
Batson, Neil	Lai, Jen	Sheahan, John
Blair, Martha	Lambert, Christine	Sheahan, Sandy
Bouma, Dirk	Lambert, Ron	Sheppard, Neil
Bouma, Sylvia	Leach, Yvonne	Stinson, Jamie
Briand, Pam	Leuprecht, Christian	Stockdale, Lyn
Briand, Steve	Leuprecht, Meghan	Sutherland, Dale
Brown, Doug	Logan, Heather	Sutherland, Linda
Brown, Maureen	Logan, Robert	Taylor, Alexandra
Chan, Roy	Losier, Heather	Taylor, Connie
Cohoe, Amos	Mackenzie, Ewen	Taylor, Stan
Cohoe, Phoebe	MacKenzie, Meredith	Thomson, Brent
de Leyer, Jonathan	Mackenzie, Sharon	Thomson, Tracey
de Leyer, Justine	Marchant, Brian	Turrell, Phyllis
de Vries, Lisa	Marchant, Jan	Unsworth, Gord
Dempster, Dave	Maynard, Ken	Valliant, Deborah
Dempster, MJ (Mary Jane)	Maynard, Sandy	Valliant, Lew
Dickey, Donna	Miller, Bev	Van Halteren, Amanda
Dickey, Ron	Miller, Ron	Vissers, Ken
Dickey, Shirley (Tooty)	Nazareth, Tiffany	Wight, Gordon
Dickey, Steve	Newcombe, Audrey	Wight, Julie
Ditmore, Jan	Northey, Jenny	Willis, Bob
Ditmore, Steve	Northey, Matthew	Willis, Nancy
Ellis, Chris	Oosterhof, Keri	Wolfrom, Brent
Ellis, Jennifer	Patelli, Jennifer	Wolfrom, Stacey
Fathers, Mark	Perkins, Brian	Wylie, Scott
Fathers, Sally	Perkins, Pat	Wylie, Simone
Gauvin-O'Donnell, Carmen	Pettingill, Wilma	
Haddad, Lucien	Prost, Eric	(107 members)
James, Suchetan	Prost, Mary	
Jansen-van Vuuren, Julia	Revell, Lillian	

DIRECTOR & ELDER NOMINATIONS

Date: October 4, 2020

To: Membership of Bethel Church, Kingston

From: 2020 Nominating Team

Subject: Recommendations for Board of Directors and Elders Council Positions

The members of the Nominating Committee were:

- Brian Marchant: Acting Director, Human Resources
- M. J. Dempster
- Donna Dickey
- Dave Lenton
- Adam Harper
- Jenny Lee Northey
- Broncos Lai (Elders' Council Rep)
- Tracey Thompson
- Pastor Mark: Ex officio

The Nominating Committee and, subsequently the Board of Directors (BoD), recommend that the Bethel Church, Kingston membership approve the following individuals into the positions as indicated.

(Note: on advice from counsel, these nominees will be voted on individually by the members.)

ELDERS COUNCIL

Position	Nominee	Term
Elder	David Saleh	Up to 3 years through to October 2023

BOARD OF DIRECTORS

Position	Nominee	Term
Director, Finance and Treasurer	Jina Salomons	Up to 3 years through to October 2023

Important note: The Nominating Team, despite considering and discussing the various leadership opportunities with a number of individuals, was unable to secure nominees for the vacant positions of Vice Chair of the Board and Director, Human Resources. The Board will continue to consider candidates through this next year and the nominating process will resume in advance of the next AGM.

SUMMARY

If the above noted nominees are approved by the membership, the next iteration of the Board of Directors and Elders' Council will be as follows:

Elders Council*

Position	Name	Term
Elder	Eric Prost	Up to October, 2022
Elder	Ken Vissers	Up to October, 2022
Elder	Broncos Lai	Up to October, 2022
Elder	David Saleh	Up to October, 2023

*3 of the above council members will be appointed to the Board of Directors

Board of Directors

Position	Name	Term
Chair	Steve Dickey	Up to October, 2022
Vice Chair	vacant	
Secretary	Jenn Ellis	Up to October, 2022
Director, Human Resources and Risk	vacant	
Director, Property	Dave Dempster	Up to October, 2022
Director, Finance and Treasurer	Jina Salomons	Up to October, 2022

2020-2021 BUDGET

• MAY 1, 2020 - APRIL 30, 2021 •

Approved by electronic vote on July 3, 2020.

Bethel Church, Kingston 2020-2021 Budget		42 % of year	
Account name	2020-2021	May to Oct	% of budget
Donation Income	659,950.00	212,482.00	32
Other Income	8,050.00	35,383.00*	440
Benevolence income	5,000.00	25.00	1
Bethel House Income	49,500.00	7,570.00	15
2020/2021 INCOME BUDGET TOTAL		255,460.00	35
Salaries, Benefit, & Allowances	426,130.00	152,990.00	36
Worship & Teaching	13,750.00	2,426.00	18
Discipleship & Community	13,700.00	1,040.00	8
Family & Youth Ministries	14,010.00	2,628.00	19
Administration	72,316.00	21,095.00	29
Operations and Maintenance	50,684.00	47,415.00**	94
Missions	68,260.00	24,675.00	36
Benevolence Expenses	5,000.00	2,000.00	40
Special Project Expenses	15,000.00	0.00	0
Bethel House Expenses	43,650.00	15,600.00	36
2020/2021 EXPENSE BUDGET TOTAL		269,869.00	37

*CEWS = 28,683 included in other income

CEBA = 40,000 not included paid off 28k loan and extra roofing cost 11K

**Roof replacement 34,715

MOTIONS FOR THE AGM

• TUESDAY, OCTOBER 20, 2020 •

MOTION #1 **On a motion duly made**, seconded and carried, be it resolved that **Jonathan de Leyer** be admitted to membership in Bethel Church, Kingston.

MOTION #2 **On a motion duly made**, seconded and carried, be it resolved that **Justine de Leyer** be admitted to membership in Bethel Church, Kingston.

MOTION #3 **On a motion duly made**, seconded and carried, be it resolved that **Mark Fathers** be admitted to membership in Bethel Church, Kingston.

MOTION #4 **On a motion duly made**, seconded and carried, be it resolved that **Sally Fathers** be admitted to membership in Bethel Church, Kingston.

MOTION #5 **On a motion duly made**, seconded and carried, be it resolved that **Heather Losier** be admitted to membership in Bethel Church, Kingston.

MOTION #6 **On a motion duly made**, seconded and carried, be it resolved that **Neil Sheppard** be admitted to membership in Bethel Church, Kingston.

MOTION #7 **On a motion duly made**, seconded and carried, be it resolved that the **Audited Financial Statements** for Year ended April 30, 2020 be approved.

MOTION #8 **On a motion duly made**, seconded and carried, be it resolved that the firm of **Withey Addison LLP** be appointed as Bethel Church, Kingston's auditors for the year ended April 30, 2021.

MOTION #9 **On a motion duly made**, seconded and carried, be it resolved that **David Selah** be elected to the position of Elder, sitting on the Elders' Council, for a period of up to 3 years, through to October, 2023.

MOTION #10 **On a motion duly made**, seconded and carried, be it resolved that **Jina Salomons** be elected to the position of Director, Finance holding the office of Treasurer, on the Board of Directors for a period of up to 3 years, through to October, 2023.

2018-2019 AGM MINUTES

Bethel Church AGM - 2019

Date: June 18, 2019

Time: 1900-1947

Location: Bethel Church, Sanctuary

Minute Taker: Stacey Wolfrom

Meeting Minutes	Action
<ol style="list-style-type: none"> 1. Welcome (Brian) <ol style="list-style-type: none"> 1.1. Call to order 1.2. Review of agenda 2. Motion #1 <ol style="list-style-type: none"> 2.1. On a motion duly made, seconded and carried, be it resolved that: Stacey Wolfrom be appointed as Secretary of the Board, for the purposes of this annual general meeting only. <ol style="list-style-type: none"> 2.1.1. Discussion 2.1.2. Vote - motioned by Chris Ellis – seconded by Phyllis – carried. 3. Confirmation of Quorum & Administrative Instructions (Brian) – 45 members confirmed. 4. Opening comments, ministry highlights, prayer (Pastor Mark) 5. New business <ol style="list-style-type: none"> 5.1. Confirmation of Bylaw <ol style="list-style-type: none"> 5.1.1. Motion #2: On a motion duly made, seconded and carried, be it resolved that he members of Bethel Church, Kingston (the Incorporated Church) confirm the Church's by-law, General Operating By-law No. 1, which was enacted by the First Directors on October 2, 2018. <ol style="list-style-type: none"> 5.1.1.1. Discussion 5.1.1.2. Vote – no opposed – carried. 5.2. Elections <ol style="list-style-type: none"> 5.2.1. Motion #3: On a motion duly made, seconded and carried, be it resolved that Eric Prost be elected to the position of Elder, sitting on the Elders Council and Board of Directors, for a period of up to 3 years. <ol style="list-style-type: none"> 5.2.1.1. Discussion 5.2.1.2. Vote – no opposed – carried. 5.2.2. Motion #4: On a motion duly made, seconded and carried, be it resolved that Ken Vissers be elected to the position of Elder, sitting on the Elders Council and Board of Directors, for a period of up to 3 years <ol style="list-style-type: none"> 5.2.2.1. Discussion 5.2.2.2. Vote – no opposed – carried. 	

- 5.2.3. Motion #5: On a motion duly made, seconded and carried, be it resolved that Broncos Lai, be elected to the position of Elder, sitting on the Elders Council and Board of Directors, for a period of up to 3 years
- 5.2.3.1. Discussion
- 5.2.3.2. Vote – no opposed – carried.
- 5.2.4. Motion #6: On a motion duly made, seconded and carried, be it resolved that Dirk Bouma, be elected to the position of Elder, sitting on the Elders Council and Board of Directors, for a period of up to 1 year.
- 5.2.4.1. Discussion – question about number of elders on board versus total number of elders.
- 5.2.4.2. Vote – no opposed – carried.
- 5.2.5. Motion #7: On a motion duly made, seconded and carried, be it resolved that Brian Marchant, be elected to the position of Director, holding the office of Chair of the Board on the Board of Directors, for a period of up to 1 year.
- 5.2.5.1. Discussion
- 5.2.5.2. Vote – no opposed – carried.
- 5.2.6. Motion #8: On a motion duly made, seconded and carried, be it resolved that Steve Dickey, be elected to the position of Director, holding the office of Vice Chair of the Board on the Board of Directors, for a period of up to 3 years.
- 5.2.6.1. Discussion
- 5.2.6.2. Vote – no opposed – carried.
- 5.2.7. Motion #9: On a motion duly made, seconded and carried, be it resolved that Jennifer Ellis, be elected to the position of Director, holding the office of Secretary of the Board, on the Board of Directors for a period of up to 3 years.
- 5.2.7.1. Discussion
- 5.2.7.2. Vote – no opposed – carried.
- 5.2.8. Motion #10: On a motion duly made, seconded and carried, be it resolved that Stacey Wolfrom, be elected to the position of Director, holding the position of Director, Human Resources and Risk, on the Board of Directors for a period of up to 2 years.
- 5.2.8.1. Discussion
- 5.2.8.2. Vote – no opposed – carried.
- 5.2.9. Motion #11: On a motion duly made, seconded and carried, be it resolved that Steve Ditmore, be elected to the position of Director, holding the position of Director, Property, on the Board of Directors for a period of up to 1 year.
- 5.2.9.1. Discussion
- 5.2.9.2. Vote – no opposed – carried.
- 5.2.10. Motion #12: On a motion duly made, seconded and carried, be it

<p>resolved that Dave Dempster, be elected to the position of Director on the Board of Directors, holding the office of Treasurer, on the Board of Directors for a period of up to 2 years.</p> <p>5.2.10.1. Discussion</p> <p>5.2.10.2. Vote – no opposed – carried.</p> <p>5.3. Approval of 2019-20 budget</p> <p>5.3.1. Presentation by Dave Dempster</p> <p>5.3.2. Motion #13: On a motion duly made, seconded and carried, be it resolved that the 2019-2020 budget, as presented, be approved by the Membership.</p> <p>5.3.2.1. Discussion</p> <ul style="list-style-type: none"> - Request was made for definition of church scattered versus church gathered - Clarification was asked for regarding the accessible bathroom. - Question was asked regarding number of people included in the salary budget. <p>5.3.2.2. Vote – no opposed – carried.</p> <p>5.4. Appointment of Public Accountant</p> <p>5.5. Motion 14: On a motion duly made, seconded and carried, be it resolved that the members of Bethel Church, Kingston (the incorporated church) confirm the first directors appointment, enacted by the first directors on October 2, 2018, of Withey Addison as the public accountant of the Corporation to hold office until the close of the next annual members meeting or until a successor is appointed, at such remuneration as may be fixed by the directors, and the directors are hereby authorized to fix such remuneration.</p> <p>5.5.1. Vote – no opposed – carried.</p> <p>6. Call for any other new business</p> <ul style="list-style-type: none"> - Ben's name misspelled in membership list. <p>7. Attendance Report (Stacey)</p> <p>7.1. Verbal report 50 attendees with 46 members (one member walked in late).</p> <p>7.2. Included in minutes</p> <p>8. Meeting Adjourned (Brian)</p>	
---	--

INDEPENDENT AUDITORS' REPORT

INDEPENDENT AUDITORS' REPORT

To the Board of Directors of Bethel Church, Kingston

Opinion

We have audited the financial statements of Bethel Church, Kingston (the Entity), which comprise the statement of financial position as at April 30, 2020 and the statements of revenues and expenditures and changes in net assets, and cash flows for the year then ended, and notes to the financial statements, including a summary of significant accounting policies.

In our opinion, except for the effects of the matters described in the Basis for Qualified Opinion paragraph, the financial statements present fairly, in all material respects, the financial position of Bethel Church, Kingston as at April 30, 2020 and the results of its operations and cash flow for the year then ended, in accordance with Canadian accounting standards for not-for-profit organizations (ASP).

Basis for Qualified Opinion

In common with many charitable organizations, the organization derives part of its revenue from donations and fundraising activities, the completeness of which is not susceptible of satisfactory audit verification. Accordingly, our audit of these revenues was limited to the amounts recorded in the records of the organization and we were not able to determine whether any adjustments might be necessary to revenues, excess of revenues over expenditures, and cash flows from operations for the years ended April 30, 2020 and 2019, current assets as at April 30, 2020 and 2019, and net assets as at May 1 and April 30 for both the 2020 and 2019 year ends. Our conclusion on the financial statements as at and for the year ended April 30, 2019 was modified accordingly because of the possible effects of this limitation in scope.

We conducted our audit in accordance with Canadian generally accepted auditing standards. Our responsibilities under those standards are further described in the Auditor's Responsibilities for the Audit of the Financial Statements section of our report. We are independent of the Entity in accordance with the ethical requirements that are relevant to our audit of the financial statements in Canada, and we have fulfilled our other ethical responsibilities in accordance with these requirements. We believe that the audit evidence we have obtained is sufficient and appropriate to provide a basis for our qualified opinion.

Other Matter

We draw your attention to Note 10 to the financial statements which states that the comparative figures for the year ended April 30, 2019 are unaudited.

Responsibility of Management and Those Charges with Governance for the Financial Statements

Management is responsible for the preparation and fair presentation of these financial statements in accordance with ASNPO, and for such internal control as management determines is necessary to enable the preparation of financial statements that are free from material misstatement, whether due to fraud or error.

In preparing the financial statements, management is responsible for assessing the Entity's ability to continue as a going concern, disclosing, as applicable, matters related to going concern and using the going concern basis of accounting unless management either intends to liquidate the Entity or to cease operations, or has no realistic alternative but to do so.

Those charged with governance are responsible for overseeing the Entity's financial reporting process.

Auditor's Responsibilities for the Audit of the Financial Statements

Our objectives are to obtain reasonable assurance about whether the financial statements as a whole are free from material misstatement, whether due to fraud or error, and to issue an auditor's report that includes our opinion. Reasonable assurance is a high level of assurance, but is not a guarantee that an audit conducted in accordance with Canadian generally accepted auditing standards will always detect a material misstatement when it exists. Misstatements can arise from fraud or error and are considered material if, individually or in the aggregate, they could reasonably be expected to influence the economic decisions of users taken on the basis of these financial statements.

As part of an audit in accordance with Canadian generally accepted auditing standards, we exercise professional judgment and maintain professional skepticism throughout the audit. We also:

- Identify and assess the risks of material misstatement of the financial statements, whether due to fraud or error, design and perform audit procedures responsive to those risks, and obtain audit evidence that is sufficient and appropriate to provide a basis for our opinion. The risk of not detecting a material misstatement resulting from fraud is higher than for one resulting from error, as fraud may involve collusion, forgery, intentional omissions, misrepresentations, or the override of internal control.
- Obtain an understanding of internal control relevant to the audit in order to design audit procedures that are appropriate in the circumstances, but not for the purpose of expressing an opinion on the effectiveness of the Entity's internal control.
- Evaluate the appropriateness of accounting policies used and the reasonableness of accounting estimates and related disclosures made by management.
- Conclude on the appropriateness of management's use of the going concern basis of accounting and, based on the audit evidence obtained, whether a material uncertainty exists related to events or conditions that may cast significant doubt on the Entity's ability to continue as a going concern. If we conclude that a material uncertainty exists, we are required to draw attention in our auditor's report to the related disclosures in the financial statements or, if such disclosures are inadequate, to modify our opinion. Our conclusions are based on the audit evidence obtained up to the date of our auditor's report. However, future events or conditions may cause the Entity to cease to continue as a going concern.
- Evaluate the overall presentation, structure, and content of the financial statements, including the disclosures, and whether the financial statements represent the underlying transactions and events in a manner that achieves fair presentation.
- Obtain sufficient appropriate audit evidence regarding the financial information of the entities or business activities within the Entity to express an opinion on the financial statements. We are responsible for the direction, supervision and performance of the audit. We remain solely responsible for our audit opinion.

We communicate with those charged with governance regarding, among other matters, the planned scope and timing of the audit and significant audit findings, including any significant deficiencies in internal control that we identify during our audit.

WITHEY ADDISON LLP

Kingston, Canada
September 24, 2020

Chartered Professional Accountants
Licensed Public Accountants

BETHEL CHURCH, KINGSTON
FINANCIAL STATEMENTS
APRIL 30, 2020

Independent Auditors' Report

BETHEL CHURCH, KINGSTON STATEMENT OF FINANCIAL POSITION

APRIL 30,	GENERAL FUND	BUILDING IMPROVEMENT FUND	2020	2019 (Unaudited)
ASSETS				
CURRENT				
Cash	\$ 227,405	\$ -	\$ 227,405	\$ 145,644
Temporary investments	-	-	-	45,374
Accounts receivable	7,804	-	7,804	5,802
	235,209	-	235,209	196,820
CAPITAL ASSETS - note 3	194,374	421,984	616,358	654,619
	\$ 429,583	\$ 421,984	\$ 851,567	\$ 851,439
LIABILITIES				
CURRENT				
Accounts payable	\$ 18,679	\$ -	\$ 18,679	\$ 8,095
Demand loans payable - note 4	45,553	29,189	74,742	91,668
Designated funds - note 5	23,327	-	23,327	78,753
	87,559	29,189	116,748	178,516
FUNDS EQUITY				
INVESTED IN CAPITAL ASSETS EXTERNALLY RESTRICTED - note 6	148,821	392,795	541,616	558,656
UNRESTRICTED	193,203	-	193,203	114,267
	342,024	392,795	734,819	672,923
	\$ 429,583	\$ 421,984	\$ 851,567	\$ 851,439

See accompanying notes to financial statements

Independent Auditors' Report

BETHEL CHURCH, KINGSTON

STATEMENT OF REVENUES AND EXPENDITURES AND CHANGES IN FUND BALANCES

FOR THE YEAR ENDED APRIL 30,	GENERAL FUND	BUILDING IMPROVEMENT FUND	2020	2019 (Unaudited)
REVENUE				
Donations				
Building improvement	\$ -	\$ 21,727	\$ 21,727	\$ 21,147
Church programs	45,601	-	45,601	16,416
Offerings	704,979	-	704,979	622,965
Interest and other income	2,680	-	2,680	5,448
Rental income	42,686	-	42,686	43,550
	795,946	21,727	817,673	709,526
EXPENDITURES				
Christian education	28,554	-	28,554	29,414
Schedule A				
Building improvement	-	59,030	59,030	29,539
Church programs	43,962	-	43,962	16,504
Mission	70,635	-	70,635	71,930
Schedule B				
Operating	138,163	-	138,163	141,821
Rental buildings	32,785	-	32,785	27,445
Salaries and benefits	382,648	-	382,648	401,545
	696,747	59,030	755,777	718,198
EXCESS OF REVENUE OVER EXPENDITURES	99,199	(37,303)	61,896	(8,672)
FUND - BEGINNING	259,461	413,462	672,923	681,595
INTERFUND TRANSFERS				
- note 7	(16,636)	16,636	-	-
FUND - ENDING	\$ 342,024	\$ 392,795	\$ 734,819	\$ 672,923

See accompanying notes to financial statements

Independent Auditors' Report

BETHEL CHURCH, KINGSTON STATEMENT OF EXPENDITURES - SCHEDULE A

FOR THE YEAR ENDED APRIL 30,	2020	2019 (Unaudited)
BUILDING IMPROVEMENT		
Amortization - church building improvements	\$ 29,377	\$ 29,377
Bank charges and interest	-	162
Roof repair	29,653	-
	\$ 59,030	\$ 29,539
CHURCH PROGRAM		
Bethel Benevolent Fund	\$ 11,653	\$ 6,239
Refugee Fund	32,309	10,265
	\$ 43,962	\$ 16,504
MISSION		
Africa Inland	\$ 3,000	\$ 2,400
Bible Club Movement	6,000	6,000
Camp Iawah	2,400	2,400
Geneva House	4,800	4,800
Inter-Varsity Christian Fellows	6,000	6,000
Kingston Pregnancy Care Centre	2,160	2,160
Latin America	2,400	2,400
Navigators	13,500	12,900
Other missions	3,000	5,470
Overseas Missionary Fellowship	3,600	3,600
Power to Change Ministries	10,800	10,200
Short-Term Missions	4,375	7,000
Urban Promise	3,600	3,600
World Focus	5,000	3,000
	\$ 70,635	\$ 71,930

See accompanying notes to financial statements

Independent Auditors' Report

BETHEL CHURCH, KINGSTON STATEMENT OF EXPENDITURES - SCHEDULE B

FOR THE YEAR ENDED APRIL 30,	2020	2019 (Unaudited)
OPERATING		
Amortization - church building, furniture and computer hardware	\$ 8,885	\$ 10,119
Bank charges and interest	6,436	2,151
Dues and fees	24,147	27,556
Insurance	8,994	7,147
Office and general	18,970	25,813
Professional fees	29,257	25,575
Repairs and maintenance	17,106	19,480
Utilities	24,368	23,980
	\$ 138,163	\$ 141,821
RENTAL BUILDINGS		
Insurance	\$ 2,291	\$ 2,017
Interest on mortgage	4,909	4,775
Repairs and maintenance	7,845	5,401
Utilities	17,740	15,252
	\$ 32,785	\$ 27,445

See accompanying notes to financial statements

Independent Auditors' Report

BETHEL CHURCH, KINGSTON STATEMENT OF CASH FLOWS

FOR THE YEAR ENDED APRIL 30,	GENERAL FUND	BUILDING IMPROVEMENT FUND	2020	2019 (Unaudited)
CASH PROVIDED FROM (USED FOR):				
OPERATING ACTIVITIES				
Net surplus	\$ 99,199	\$ (37,303)	\$ 61,896	\$ (8,672)
Items not requiring a cash payment				
Amortization	8,885	29,377	38,262	39,496
Change in non-cash working capital				
Investment	45,374	-	45,374	(25,243)
Accounts receivable	(2,002)	-	(2,002)	12,835
Accounts payable	14,879	(4,295)	10,584	985
	166,335	(12,221)	154,114	19,401
FINANCING ACTIVITIES				
Demand loan repayments	(12,510)	(4,415)	(16,925)	(34,330)
DESIGNATED FUNDS				
	(55,428)	-	(55,428)	28,390
INTERFUND TRANSFERS - note 7				
	(16,636)	16,636	-	-
NET CASH PROVIDED	81,761	-	81,761	13,461
CASH - beginning	145,644	-	145,644	132,183
CASH	\$ 227,405	\$ -	\$ 227,405	\$ 145,644

See accompanying notes to financial statements

BETHEL CHURCH, KINGSTON

NOTES TO THE FINANCIAL STATEMENTS

APRIL 30, 2020

1. PURPOSE OF THE ORGANIZATION

Bethel Church, Kingston ("the Church") serves the Kingston, Ontario community providing spiritual guidance and delivering programs and support to individuals and families. The Church was incorporated on June 28, 2018 and the assets were transferred to the corporation effective May 1, 2019. Prior to incorporation the Church operated as an unincorporated not-for-profit organization, as Bethel Associated Gospel Church. The Church is a registered charity under the Income Tax Act.

2. SUMMARY OF SIGNIFICANT ACCOUNTING POLICIES

The Church prepares its financial statements in accordance with Canadian accounting standards for not-for-profit organizations, which includes the following significant accounting policies:

(a) Use of estimates

These financial statements have been prepared by management with Canadian accounting standards for not-for-profit organizations. The preparation of financial statements in conformity with Canadian accounting standards for not-for-profit organizations requires management to make estimates and assumptions that affect the amounts reported in the financial statements and accompanying notes. These estimates are reviewed periodically and as adjustments become necessary, they are reported in operations in the period in which they have become known. Actual results could differ from those estimates. These financial statements have, in management's opinion, been properly prepared using careful judgment within reasonable limits of materiality and within the framework of the significant accounting policies summarized below.

(b) Fund accounting

The Church follows the restricted method of accounting for contributions.

The General Fund accounts for the Church's program delivery and administrative activities. This fund reports unrestricted resources and includes the administration of the rental properties owned by the Church.

The Building Improvement Fund initiated in 1999 reports the assets, liabilities, revenues and expenses related to the building expansion campaign, as well as donations for ongoing building improvements and renovations.

(c) Capital assets

Capital assets are recorded at cost. Contributed capital assets are recorded at fair value at the date of contribution. Amortization is calculated on a straight-line basis over the assets' estimated useful lives.

Buildings	- 30 years
Computer hardware	- 5 years
Computer software	- 1 year
Furniture/Equipment	- 10 years

In the year of acquisition of an asset, the above rates are reduced by 50%.

BETHEL CHURCH, KINGSTON

NOTES TO THE FINANCIAL STATEMENTS

APRIL 30, 2020

2. SUMMARY OF SIGNIFICANT ACCOUNTING POLICIES - (CONTINUED)

(d) Revenue recognition

Unrestricted contributions are recognized as revenue of the General Fund in the year received or receivable if the amount to be received can be reasonably estimated and collection is reasonably assured. Designated funds are recorded as revenue in the year in which they are received, and are deferred until the funds are expended as designated.

Restricted contributions related to the Building Improvement Fund are recognized as revenue in this fund in the year it is received or receivable if the amount to be received can be reasonably estimated and collection is reasonably assured.

Investment income earned on assets of the General Fund are recognized as revenue when earned. Investment income earned on assets of the Building Improvement Fund are recognized in that fund when earned.

(e) Contributed services

Volunteers contribute work hours to assist the Church in carrying out its service delivery activities. Because of the difficulty of determining their fair value, contributed services are not recognized in these financial statements.

(f) Financial instruments

The Church initially measures its financial assets and financial liabilities at fair value. Subsequently, all financial assets and financial liabilities are measured at cost or amortized cost, except for investments in equity instruments which are measured at fair value. Changes in fair value of these financial instruments are recognized in net income.

Financial assets measured at amortized cost on a straight-line basis include cash and accounts receivable.

Financial assets measured at fair value include temporary investments.

Financial liabilities measured at amortized cost include accounts payable.

The Church has not identified any contracts that meet the requirements for classification as derivatives, nor has it identified any arrangements that contain embedded derivatives.

Financial assets measured at amortized cost are tested for impairment when there are indicators of impairment. The amount of the write-down is recognized in net income. The previously recognized impairment loss may be reversed to the extent of any improvement, provided it is no greater than the original impairment amount. The amount of the reversal is recognized in net income.

BETHEL CHURCH, KINGSTON NOTES TO THE FINANCIAL STATEMENTS

APRIL 30, 2020

3. CAPITAL ASSETS

	Cost	Accumulated Amortization	2020	2019 (Unaudited)
Land	\$ 78,500	\$ -	\$ 78,500	\$ 78,500
Building - Church	168,498	168,498	-	-
- Church expansion	881,319	459,335	421,984	451,361
- Rental buildings	326,983	211,265	115,718	123,517
Computer hardware	22,290	22,134	156	862
Furniture/Equipment	76,770	76,770	-	379
Computer software	4,818	4,818	-	-
	\$ 1,559,178	\$ 942,820	\$ 616,358	\$ 654,619

Cost and accumulated amortization for the year ended April 30, 2019 were \$1,559,178 and \$904,559, respectively.

4. DEMAND LOANS PAYABLE

	2020	2019 (Unaudited)
Royal Bank demand instalment loan #1	\$ 31,272	\$ 39,861
Royal Bank demand instalment loan #2	14,281	18,203
Royal Bank demand instalment loan #3	29,189	33,604
	\$ 74,742	\$ 91,668

Although the Royal Bank loans are of a demand nature, management does not expect the loans to be called. Therefore, future principal payments are expected to be as follows -

2021	\$ 42,365
2022	13,872
2023	14,603
2024	3,902
2025	-
	\$ 74,742

BETHEL CHURCH, KINGSTON NOTES TO THE FINANCIAL STATEMENTS

APRIL 30, 2020

4. DEMAND LOANS PAYABLE - (CONTINUED)

Royal Bank demand instalment loan #1 - 324 Johnson Street

The Royal Bank demand instalment loan is repayable on demand and in the absence of demand for payment, the loan is repayable in blended monthly payments of \$870 and bears interest at 5.15% per annum. The loan matures in August 2023.

Royal Bank demand instalment loan #2 - 318 Johnson Street

The Royal Bank demand instalment loan is repayable on demand and in the absence of demand for payment, the loan is repayable in blended monthly payments of \$398 and bears interest at 5.15% per annum. The loan matures in August 2023.

Royal Bank demand instalment loan #3

The Royal Bank demand instalment loan is repayable on demand and in the absence of demand for payment, the loan is repayable in blended monthly payments of \$446 and bears interest at 4.02% per annum. The loan matures in July 2020.

The credit facilities with the Royal Bank are secured by a general security agreement and the properties at 314, 318 and 324 Johnson Street owned by the Church with the carrying value at April 30, 2020 of \$616,202.

5. DESIGNATED FUNDS

The Church administers certain programs for which donations can be designated. These programs are listed on Schedule A under Church Programs. When donations are designated for use in these programs, the money is deposited in the general fund, but is set up as owing specifically to the designated program. The donations are recognized as revenue when the funds are expended.

	2020	2019 (Unaudited)
Build Fund	\$ -	\$ 43,023
Refugee	19,975	32,378
Youth Canteen	-	260
Youth Retreat Fund	3,352	3,092
	\$ 23,327	\$ 78,753

BETHEL CHURCH, KINGSTON

NOTES TO THE FINANCIAL STATEMENTS

APRIL 30, 2020

6. EXTERNALLY RESTRICTED NET ASSETS

In 1999, Bethel Church initiated a building improvement fund to raise funds for the west wing expansion of the Church. Since that time donations made to the fund and investment income earned on fund assets have been invested in GICs. While some expenses for planning and design of the wing were incurred from 1999 to 2002, the actual construction of the expansion did not begin until 2003 when the foundation was poured. The construction of the west wing expansion was completed in 2005. The building improvement fund cash balance and receivables total \$Nil (2019 - \$-) and are restricted for use to improve or renovate the buildings and pay down debts related to improvements or renovations.

From time to time funds are created for minor projects that recur on an annual basis. These funds are maintained as restricted or designated funds within the general fund balances.

7. INTERFUND TRANSFERS

Transfers between the general operating fund and the building improvement fund occur because the weekly offerings are deposited to the general fund first and then transferred to the appropriate fund. Other transfers can occur between funds as loans when a fund is lacking in cash flow.

8. FINANCIAL INSTRUMENTS

(a) Liquidity risk

Liquidity risk is the risk that the Church will be unable to fulfil its obligations on a timely basis or at a reasonable cost. The Church's exposure to liquidity risk is mainly with respect to its accounts payable and demand loans payable and is dependent upon the continued contributions from its members and adherents, as well as being able to maintain sufficient working capital to cover its operating program costs.

Management is of the opinion that liquidity risk does not represent a significant risk to the Church, and that there has been no change to risk exposure from 2019.

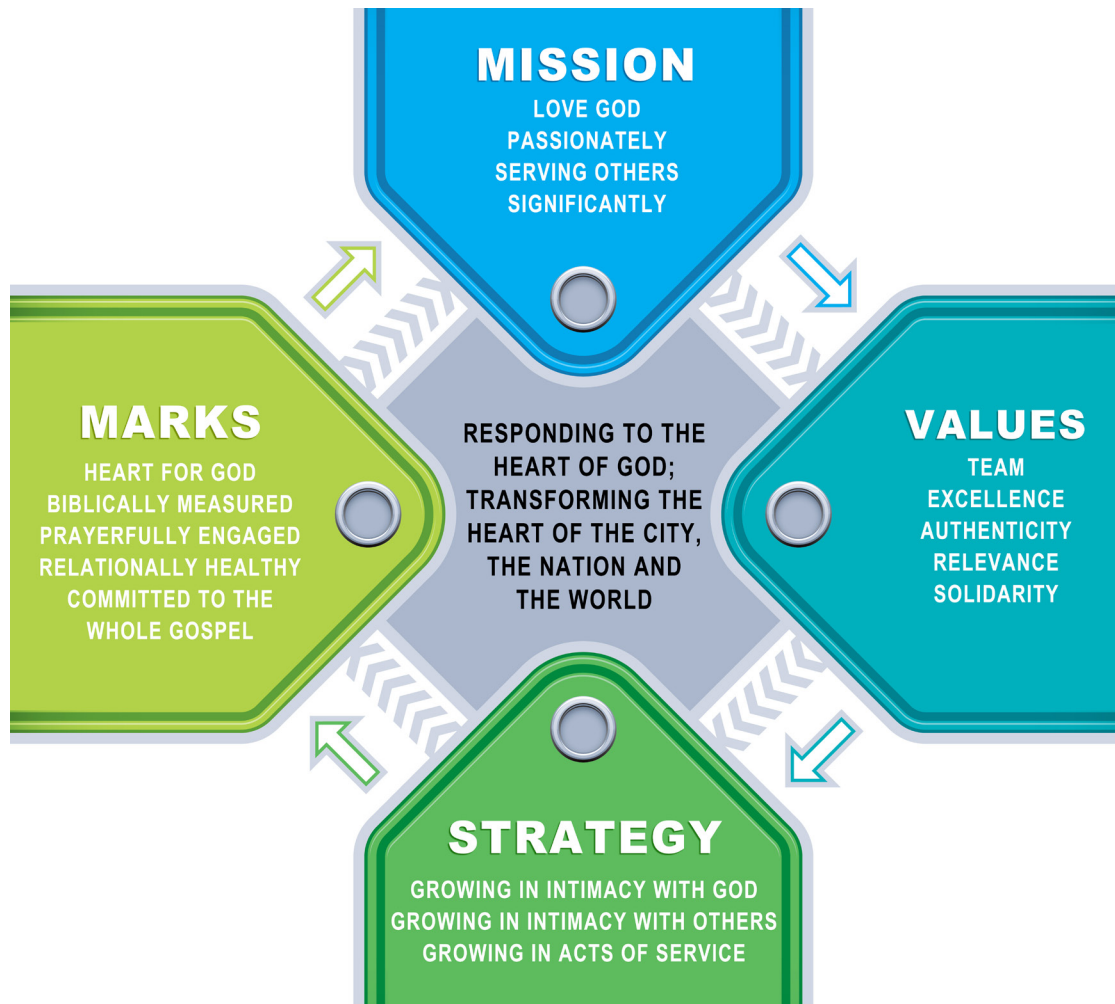
9. SUBSEQUENT EVENT

Subsequent to the year-end, there was a global outbreak of COVID-19 (coronavirus), which has had an impact on businesses through the restrictions put in place by the Canadian, provincial and municipal governments. At this time, the extent of the impact is not determinable and will depend on future developments. These impacts may negatively affect the Company's financial condition in the coming years.

10. COMPARATIVE FIGURES

The comparative figures for the year ended April 30, 2019 were reviewed and not audited. Certain figures have been restated to conform with the presentation adopted in the current year.

BETHEL'S VISION PATHWAY



THE STRATEGY - HOW ARE WE ORGANIZED?

GROWING IN INTIMACY WITH GOD

The upward direction of our lives in connecting with God is the most important relationship of all. Our Sunday mornings, while meeting many needs, are primarily a GG experience. However, a deepening relationship with Christ should have the affect of moving people deeper into community with others.

GROWING IN INTIMACY WITH OTHERS

The inward direction of our lives involves connecting deeper into community. We believe that community is key to transformation. One of our primary ministries that facilitates this kind of movement is our small groups. LIFE groups can range in size from 2-15, can be somewhat traditional in their format or have a much more open agenda. The key issue is life change around the Word and in community.

GROWING IN ACTS OF SERVICE

The outward direction involves living out the values of the Kingdom in society. There are a number of ministry teams in the Church that are GS directed. While we encourage and need people to be involved in these teams to make the gathered church function, we also value what is done beyond the walls of the gathered Church Monday thru Saturday.

THE MISSION – WHAT DO WE DO?

Love God Passionately, Serve Others Significantly

THE MARKS OF A DISCIPLE – WHAT ARE WE TRYING TO PRODUCE?

We have identified our marks which describe a maturing disciple: Diligently Seeking God, Biblically Measured, Prayerfully Engaged, Relationally Healthy, and Fully Committed to the Whole Gospel for the Whole World. Each mark is outlined below and allows an individual to evaluate where they are at and where they need to grow.

DILIGENTLY SEEKING GOD (FATHER, SON, HOLY SPIRIT)

This speaks of passion, intellect and priorities. “But seek first his kingdom and his righteousness, and all these things will be given to you as well.” Matthew 6:33

BIBLICALLY MEASURED (EVERYTHING BY THE BOOK)

While the world attempts to shape us, the Word of God is what transforms us by the work of the Holy Spirit. We need to submit to the whole counsel of God. *“For the word of God is living and active. Sharper than any double-edged sword, it penetrates even to dividing soul and spirit, joints and marrow; it judges the thoughts and attitudes of the heart.”* Hebrews 4:12

PRAYERFULLY ENGAGED

This refers to times of formal and informal prayer, where our hearts are attuned to the promptings of God 24/7. Adoration, confession, thanksgiving and supplication often shape our prayers. *“And pray in the Spirit on all occasions with all kinds of prayers and requests. With this in mind, be alert and always keep on praying for all the saints.”* Ephesians 6:18

RELATIONALLY HEALTHY

As one looks to all the spheres of relationships, there needs to be a growing sense of health. We must take responsibility to keep short accounts; it is up to the other party to do the same. *“If it is possible, as far as it depends on you, live at peace with everyone.”* Romans 12:18

FULLY COMMITTED TO THE WHOLE GOSPEL FOR THE WHOLE WORLD

The Gospel has two sides, like two sides of a coin. One deals with the soul, the eternal state of a person, and the other deals with the temporal needs. We are committed to the whole Gospel for the whole person! *“The scroll of the prophet Isaiah was handed to him. Unrolling it, he found the place where it is written: ‘The Spirit of the Lord is on me, because he has anointed me to preach good news to the poor. He has sent me to proclaim freedom for the prisoners and recovery of sight for the blind, to release the oppressed, to proclaim the year of the Lord’s favor.’”* Luke 4:17-19

THE VALUES – WHAT DOES RELATIONAL INTEGRITY LOOK LIKE?

We have also outlined 5 values in our vision pathway: Teamwork, Excellence, Authenticity, Relevance and Solidarity. Value focus ensures that the movement of the church does not neglect the relational integrity of the community.

TEAMWORK (WE vs. ME)

All for one and one for all | Greater safety in teams, not working alone

“As a prisoner for the Lord, then, I urge you to live a life worthy of the calling you have received. Be completely humble and gentle; be patient, bearing with one another in love. Make every effort to keep the unity of the Spirit through the bond of peace. There is one body and one Spirit, just as you were called to one hope when you were called; one Lord, one faith, one baptism;” Ephesians 4:1-5 (NIV)

EXCELLENCE (NOT ‘SO-SO’ BUT ‘BRAVO’)

A misunderstanding of excellence causes us to default to one of two extremes—mediocrity or perfectionism—both of which dishonour God.

“A son honors his father, and a slave his master. If I am a father, where is the honor due me? If I am a master, where is the respect due me?” says the LORD

Almighty. It is you priests who show contempt for my name. But you ask, 'How have we shown contempt for your name?' 'By offering defiled food on my altar. 'But you ask, 'How have we defiled you?' 'By saying that the LORD's table is contemptible. When you offer blind animals for sacrifice, is that not wrong? When you sacrifice lame or diseased animals, is that not wrong? Try offering them to your governor! Would he be pleased with you? Would he accept you?' says the LORD Almighty. 'Now plead with God to be gracious to us. With such offerings from your hands, will he accept you?'—says the LORD Almighty. 'Oh, that one of you would shut the temple doors, so that you would not light useless fires on my altar! I am not pleased with you,' says the LORD Almighty, 'and I will accept no offering from your hands. My name will be great among the nations, from where the sun rises to where it sets. In every place incense and pure offerings will be brought to me, because my name will be great among the nations,' says the LORD Almighty. 'But you profane it by saying, 'The Lord's table is defiled,' and, 'Its food is contemptible.' And you say, 'What a burden!' and you sniff at it contemptuously,' says the LORD Almighty. 'When you bring injured, lame or diseased animals and offer them as sacrifices, should I accept them from your hands?' says the LORD. 'Cursed is the cheat who has an acceptable male in his flock and vows to give it, but then sacrifices a blemished animal to the Lord. For I am a great king,' says the LORD Almighty, 'and my name is to be feared among the nations.' Malachi 1:6-14

AUTHENTICITY (PERMISSION TO SPEAK FREELY)

Real not slick | Live what you say | Genuine

"We have spoken freely to you, Corinthians, and opened wide our hearts to you. We are not withholding our affection from you, but you are withholding yours from us. As a fair exchange—I speak as to my children—open wide your hearts also." 2 Corinthians 6:11-13

RELEVANCE (UPDATED VS. OUTDATED)

We speak to today's generation in today's language with God's unchanging truth

"Then they took him and brought him to a meeting of the Areopagus, where they said to him, 'May we know what this new teaching is that you are presenting? You are bringing some strange ideas to our ears, and we would like to know what they mean.' (All the Athenians and the foreigners who lived there spent their time doing nothing but talking about and listening to the latest ideas.) Paul then stood up in the meeting of the Areopagus and said: 'People of Athens! I see that in every way you are very religious. For as I walked around and looked carefully at your objects of worship, I even found an altar with this inscription: TO AN UNKNOWN GOD. So you are ignorant of the very thing you worship—and this is what I am going to proclaim to you. 'The God who made the world and everything in it is the Lord of heaven and earth and does not live in temples built by human hands. And he is not served by human hands, as if he needed anything. Rather, he himself gives everyone life and breath and everything else. From one man he made all the nations, that they should inhabit the whole earth; and he marked out their appointed times in history and the boundaries of their lands. God did this so that they would seek him and perhaps reach out for him and find him, though he is not far from any one of us. 'For in him we live and move and have our being.' As some of your own poets have said, 'We are his offspring,' 'Therefore since we are God's offspring, we should not think that the divine being is like gold or silver or stone—an image made by human design and skill. In the past God overlooked such ignorance, but now he commands all people everywhere to repent. For he has set a day when he will judge the world with justice by the man he has appointed. He has given proof of this to everyone by raising him from the dead.' When they heard about the resurrection of the dead, some of them sneered, but others said, 'We want to hear you again on this subject.' At that, Paul left the Council. Some of the people became followers of Paul and believed. Among them was Dionysius, a member of the Areopagus, also a woman named Damaris, and a number of others." Acts 17:19-34 (NIV)

SOLIDARITY (BEING FOR PEOPLE, BEING WITH PEOPLE)

Being with people, not us vs. them | Compassion & Justice | Looking out for the least

"Who, being in very nature God, did not consider equality with God something to be used to his own advantage; rather, he made himself nothing by taking the very nature of a servant, being made in human likeness. And being found in appearance as a man, he humbled himself by becoming obedient to death - even death on a cross!" Therefore God exalted him to the highest place and gave him the name that is above every name, that at the name of Jesus every knee should bow, in heaven and on earth and under the earth, and every tongue acknowledge that Jesus Christ is Lord, to the glory of God the Father." Philippians 2:6-11

+Bethel Church

"Responding to the Heart of God; Transforming the
Heart of the City, the Nation, and the World."